



# 样品承认书

品 名： Φ18 平面管白色（偏蓝）

规 格： ULA-Φ18BW-2B

编 号： 2017-07

客户签字栏		
核准	审核	承认

本公司签字栏		
核准	审核	制作

地址：广东省中山市南区昌盛路4号

电话：0760-3886633 3886636 3886632

传真：0760-3886658

网址：www.jlul.com

电子邮箱：[jinglei@jlul.com](mailto:jinglei@jlul.com)



PART NO.: ULA-Φ18BW-2B

ELECTRICAL AND OPTICAL CHARACTERISTICS(Ta=25°C)

Parameter	Symbol	Min	Typ	Max	Unit	Test Condition
<b>Chromaticity Coordinates</b>	X	0.2139	0.2373	0.2557	---	IF=20mA
	Y	0.2081	0.2208	0.2383		IF=20mA
Luminous Intensity	IV	106	---	127	mcd	IF=20mA
Viewing Angle	2θ 1/2	--	120	/	Deg	IF=20mA
Forward voltage	VF	2.6	3.0	3.8	V	IF=20mA

Remark: Viewing angle is the Off-axis angle at which the luminous intensity is half the axial luminous intensity.

ABSOLUTE MAXIMUM RATINGS(Ta=25°C)

Reverse Voltage.....5V

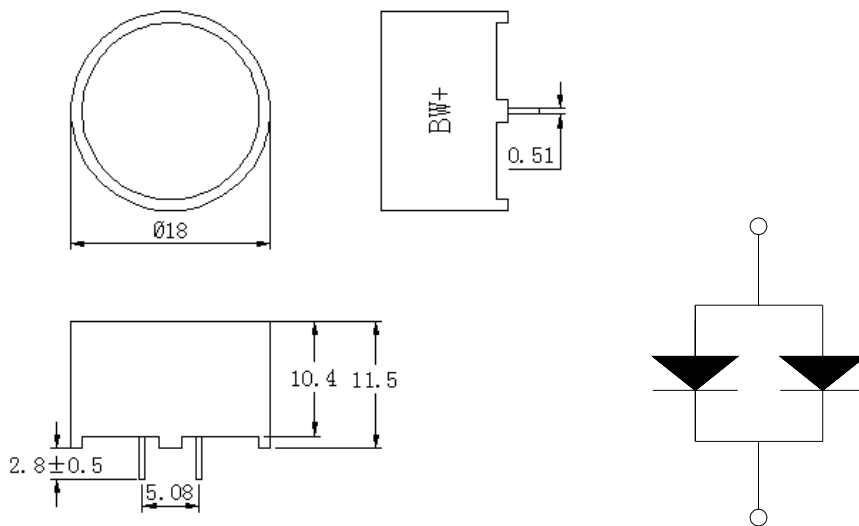
Reverse Current(V<sub>R</sub>=5V).....20 μ A

Operating Temperature Range.....-25°C~+80°C

Storage Temperature Range.....-30°C~+80°C

Lead Soldering Temperature..... 260°C For 5 Seconds

PACKAGE DIMENSION:



未标注尺寸公差为±0.2

客户名称:

工程确认:

日期:



PART NO.: ULA-Φ18BW-2B

TYPICAL ELECTRO-OPTICAL CHARACTERISTICS CURVE:

